

Pull Cylinders - Plain Ram, Single Acting, Spring Return

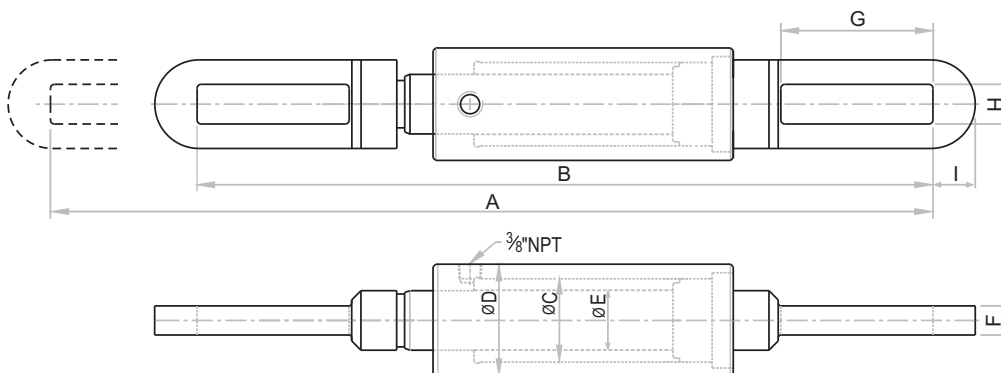
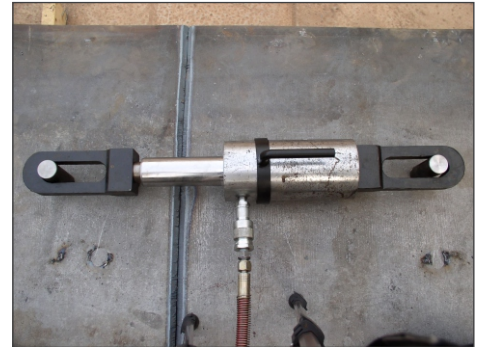
Capacity 10 - 30 ton / Stroke 150 mm / Max. Working Pressure 700 bar

HYDRAULIC TOOLS



Features / Application

- Replacement for Turn buckle mechanism for heavy loads
- Compression spring extends piston rod when pump pressure is released
- For pulling and tensing in heavy fabrication and maintenance
- Useful in steel structural works and tensing



OSPC Series - **O** Oriane **S** Spring return **P** Pull **C** Cylinder **10** Capacity - ton **150** Stroke - mm

Capacity (ton)	Capacity (kN)	Stroke (mm)	Model	Effective area (cm ²)	Oil capacity (cc)	Extended A (mm)	Closed height B (mm)	Bore dia. C (mm)	Ram dia. E (mm)	Cylinder OD D (mm)	Link thickness F (mm)	Slot opening G (mm)	Slot width H (mm)	Slot to link end I (mm)	Wt. (Approx.) (kg)
10	107	150	OSPC-10-150	15.3	230	691	541	63	45	85	22	115	30	32	14
20	225	150	OSPC-20-150	32.1	485	770	620	85	56	115	28	125	40	36	28
30	332	150	OSPC-30-150	47.4	715	820	670	100	63	135	32	132	45	40	48

|| Higher capacity and customized solutions on request. || Specifications are subject to change due to continual improvement.
 || Capacity and Stroke specified are maximum safe limits. As safe practice, use at 80% of rating.